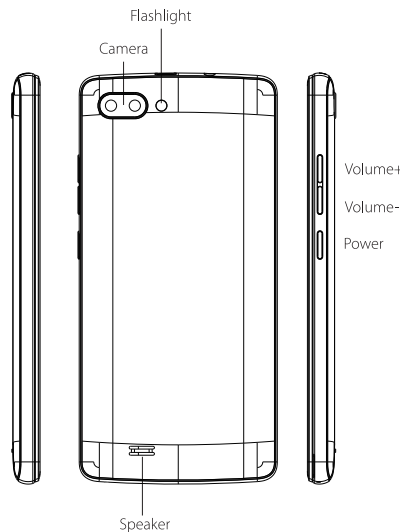
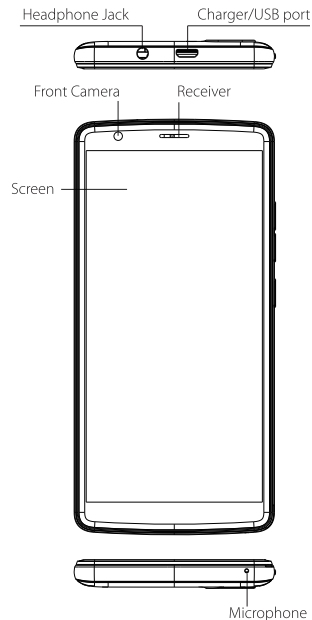
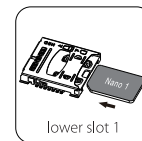


Blackview Smartphone for everyone A20

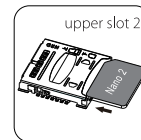


Installation:

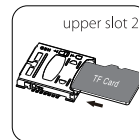
1. Make the metal face down, as illustrated, push the Nano card into the slot 1.



2. As the step 1, push the other Nano card or Micro SD card into the slot 2.

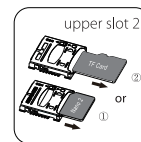


or

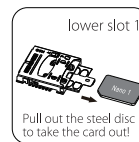


Remove the card:

1. Take the Nano or Micro SD card out from the slot 2.



2. As illustrated, pull out the steel disc, and take the nano card out from the slot 1.



Camera

Take a picture

- ① Open the Camera app.
- ② To zoom in and out, slide your finger on the zoom bar.
- ③ Tap to take the picture.

Record a video

- ① Open the Camera app.
- ② Tap to start record video.
- ③ Slide your finger on the zoom bar to zoom in and out while recording.
- ④ Tap on the left top of panel to stop recording.

Send a Picture or Video

- ① Open the Gallery app.
- ② Browse an album, and then tap a picture or video.
- ③ Tap on the right top of the panel to share via Bluetooth, send by email, send as a message, or upload to a social network.

Text Messaging

Send a Text Message

- ① Open the Messages app.
- ② Tap to compose a new message.
- ③ Enter a number or tap to browse your contacts.
- ④ Tap the add text field to enter your message.
- ⑤ Tap to send.

Attach a Picture or Video

- ① While composing a text message, tap
- ② Select Picture, video or other files you want to attach, even make a new one right now.
- ③ Tap to send.



Follow Blackview communtiy a place where you can share and discuss with Blackview user keep posted with most up-to-day news

Operating Frequency Range/ Max Output Power

Frequency Bands:
GSM850: (824-849MHz 869-894MHz)
Modulation Mode: GMSK
Antenna Type: PIFN
Antenna Gain:-1.2dBi
Max power:32.7dB

Frequency Bands:
EGSM 900: (885MHz-915MHz 930MHz-960MHz)
Modulation Mode: GMSK
Antenna Type: PIFN
Antenna Gain: -0.8dBi
Max power: 32.7dB

Frequency Bands:
GSM 1800: (1710MHz-1785MHz 1805MHz-1880MHz)
Modulation Mode: GMSK
Antenna Type: PIFN
Antenna Gain:1.1dBi
Max power: 29.7dB


Frequency Bands:
PCS1900: (1850-1910MHz 1930-1990MHz)
Modulation Mode: GMSK
Antenna Type: PIFN
Antenna Gain: 1.3dBi
Max power: 29.7dB

WCDMA
Frequency Bands:
BAND1-2100MHz
Antenna Gain: 1.0dBi
Max power: 23.2dB
Frequency Bands:
BAND8-900MHz
Antenna Gain: 0.8dBi
Max power: 23.2dB

Bluetooth 4.2
Frequency Bands: 2402MHz-2480MHz
Modulation Mode: GFSK
Antenna Type: PIFN
Antenna Gain: 1.8dBi
EIRP Max power: 5.5dB

Frequency Bands:65-108MHZ
Modulation Mode:FM
Antenna Type: one legged
Antenna Gain:
(Earphone acts as FM antenna which becomes an integral antenna)

CE Maintenance

1. Use careful with the earphone maybe excessive sound pressure from earphones and headphones can cause hearing loss. 
2. Risk of explosion if battery is replaced by an incorrect type. Dispose of used batteries according to the instructions.
3. The product shall only be connected to USB interface of version USB2.0
4. Adapter shall be installed near the equipment and shall be easily accessible.
5. EUT Operating temperature range:-10°C to 40°C.
6. Adapter: The plug considered as disconnect device of adapter
Input: AC 100-240V, 50/ 60Hz, 0.15A
Output: 5V1000mA
7. The device complies with RF specifications when the device used at 5mm from your your body.
8. To prevent possible hearing damage. Do not listen at high volume levels for ling eriods.

Declaration of Conformity

Shenzhen DOKE Electronics Co., Ltd hereby declares that this GSM Mobile Phone is in compliance with the essential requirements and other relevant provisions of Directive 2014/53/EU. This product is allowed to be used in all EU member states.

Shenzhen DOKE Electronics Co., Ltd
Address:13/F,Wei Dong Long Business Building B,
Mei Long Ave, Long Hua New District Shenzhen.